



Your complimentary
use period has ended.
Thank you for using
PDF Complete.

[Click Here to upgrade to
Unlimited Pages and Expanded Features](#)

Announcements - October 4, 2009

ample of the love of Jesus Christ"
6-8383 / email: office@hopetoledo.net
www.hopetoledo.net

INVITING PEOPLE TO CONNECT WITH GOD

Welcome to Hope Church! If you are a guest this morning, please notice the staff and lay leaders wearing identification badges. They will be able to assist you with any concerns. For the hearing impaired: place your hearing aids on the "T" switch for direct audio input during the service. Join us this morning in the lounge between services for fellowship and refreshments.

· During worship today, please make sure that cell phones and pagers are in their silent mode or turned off.

WELCOME, UT STUDENTS! Thanks for choosing to worship with us today. We are honored to be your church "home away from home" this school year. Be sure to fill out the yellow "College Students" information sheet in the blue pew book.

HOPE COLLEGE STUDENTS, we need your address too! Please fill out the "College Students" sheet as well. If you don't know your address yet, be sure to let us know when you do!

ENCOURAGING PEOPLE TO CONNECT WITH EACH OTHER

Servants Needed

COOKS AND CHEFS AND BAKERS, OH MY!

The annual Harvest Festival is around the corner (October 25th), and we are looking for help in cooking a simple meal to be served to all who come. Contact Mona Pupos (419-861-0627) to join the team.

HEALTH FAIR

We need volunteers to help plan the Health Fair to be held at Hope on March 20. A planning meeting is scheduled for Tues., Oct. 13 at 7 pm. Come with your ideas and suggestions.

COLLEGE STUDENT BIRTHDAY RECOGNITION

We are launching a new Ministry this Sunday! We will be sending birthday cards to the youth of Hope who are attending college. Please stop by the lounge this morning to add a birthday greeting for the October and November birthdays.

WALK THRU THE NEW TESTAMENT On Saturday, October 10th, Hope will host a Walk Thru the New Testament Seminar. **SIGN UP TODAY!** Registration forms are available on the hallway table with the sign up sheet.

HOCKEY PRAYER PARTNERS Pastor Tom is planning to serve as team chaplain for the Toledo Walleye hockey team this season. If you would commit to try to pray daily for Tom and this outreach ministry, the sign-up sheet is located on the table outside the lounge. Today is the last day to sign up.

EQUIPPING PEOPLE TO LIVE THE GOD LIFE

UPCOMING PREACHING SCHEDULE

Today	Pastor Andrea preaching
Oct. 11	Pastor Laura preaching
Oct. 18	Pastor Andrea preaching
Oct. 25	Pastor Tom preaching

HEALING SERVICE will be held today at 4:00 pm with Pastor Laura sharing the message. Following the service, the Mental Health Ministry Team at Hope invites everyone to join them for a light supper and the movie, "The Soloist."

LUNCHESS WITH LUTHER - All are invited to come on Tuesdays for lunch at noon (\$3) followed by an interesting study led by Pastor Andrea.

LIFE IN CHRIST, our new member class will be held on Sundays, Oct. 11, 18, 25, and Nov. 1 and 8 from 6:30 to 8 pm. Child care provided. This class is for all interested in joining Hope Church including those wishing to transfer from other congregations. Members will be received on Sunday, Nov. 15. Please talk to one of the pastors or call the church office, 419-536-8383 to confirm your attendance.

HOPE MISSION TEAM is planning another trip to Orange, Texas, from Nov. 5 through Nov. 15. If you are interested in participating in this mission trip, call Fred Bretzloff at 419-531-4640 or 419-704-5999. Deadline date is October 19.

NAMI (National Alliance on Mental Illness) annual fundraising event is Sat., Oct. 10 at Lourdes College. Pick up a flier from an usher or from the hallway table. All donations for "Walk for the Mind" can be put in Phil Meuser's mailbox as late as Sunday, October 11. Cash or checks should be made out to Hope Lutheran Church (Walk for the Mind in the memo). All donations will be **MATCHED BY THRIVENT FINANCIAL FOR LUTHERANS** and will be given to the local NAMI office as part of our Mental Health Ministry. Questions, call Sandra Melton 1-734-847-7339.

TIMELESS WISDOM! God provides "Timeless Wisdom" through Biblical principles about how we are to manage money and possessions. Contact Chris Rowe at 419-531-2864 or Ron Pettaway at 419-535-5745 for hope, help and insight.

BIBLES are needed at Salem—Kids, Youth, Adult (The Message or Today's English Version) and large print editions. Drop off donations in the church office.

Kingston: Maxine Swing **At Home:** John Wagoner
→ Please notify the church office when you or a family member is hospitalized. (419-536-8383)

CONFIRMATION STUDENTS to be prayed for this week: Mark Hadley, Robby Kohler, Sara Martin, Susi Martinez,

BIBLES are being presented to all 3rd grade students during the 11:00 worship service this morning. May this copy of The Message guide and inspire these young children.

ALTAR FLOWERS have been given to the Glory of God by Roseanne Martinez in honor of her husband, Misael and her brother-in-law, David, and in loving memory of her good friend, Suzanne.

SCHEDULE

THIS WEEK AT HOPE - Oct. 4 - Oct. 10

TODAY 8:00, 9:30 and 11:00 Worship Services
9:30am Disciples in Training & SS
4:00pm Healing Service in Sanctuary
5:30pm Dinner and Movie in Larson Hall
7:00pm CRHP Men in Lounge

MON 1:00pm John Bible Study at Woodlands
6:00pm UT Student Dinner in Larson Hall
6:00pm Healing Ministry in Library
6:00pm Prayers in Sanctuary
7:00pm John Study at Kalb's
7:00pm Information Mtg. in Larson Hall
7:30pm Alanon in Nursery
8:30pm Mission Outreach in Lounge

TUES 9:30am John Study at Café Marie
12:00pm Lunches w/Luther in Larson Hall
6:45pm Experiencing God in Library
7:00pm Staff, Mgmt, Vision Teams in Lounge
8:30pm A.A. in Larson Hall

WED 5:15pm Chime Choir in Choir Room
5:30pm Connecting Point in Lounge
6:00pm Children's Choir in Choir Room
6:00pm Confirmation Class in Larson Hall
7:00pm The Case for Faith in Upper Room
7:00pm Chancel Choir in Choir Room
8:00pm Handbell Choir in Sanctuary

THURS 7:00am Thursday Morning Study in Lounge
9:30am Women's Study in S Lounge
10:00am Caregivers in Library
6:30pm CRHP Women in Lounge
7:00pm Finance Team in Library
7:00pm Connections @ Mulligans

FRI 8:00pm AA in Larson Hall

SAT 9:00am Walk thru the New Testament-Sanctuary
4:00pm Serving at Cherry St. Mission

POSTERS FOR BETHLEHEM are now available. If you have a place to display one (in a store or your workplace), please see Diane Barnes.

FLU SEASON is here! The nation is preparing for a major flu season. If you feel ill, stay home to avoid contact with others. Upon arriving and leaving the Church, use the Purell Sanitizers located around the building. Check with your physician to see if you should have the flu vaccination and the H1N1 vaccine.

MINISTRY

TODAY'S MINISTERS

PROCLAIMERS	8:00	Paul Peters
OF THE WORD	11:00	Phil Meuser
ACOLYTE/CRUCIFER	8:00	Tommy Rudolph
	11:00	John Collier
WELCOME TEAMS	8:00	John Cupp and Scott Elston
	9:30	Jean Sapon, Don Blakeman Al and Jackie Mercer
	11:00	Ron and Marva Pettaway Herman Bersticker, Dick Melton

HOPE'S MINISTRY TEAM

Ministers The Members of Hope
Interim Senior Pastor Andrea Starn
(Home 1-419-424-6663) (Cell 419-348-1204)
astarn@hopetoledo.net

Discipleship Pastor Tom Fraser
(Home 419-382-9669) tfraser@hopetoledo.net

Pastor of Student and Family Life Laura Strietelmeier
(Cell 419-309-9358) lstrietelmeier@hopetoledo.net

Minister of Music Lori Bitz
lbitz@hopetoledo.net

Minister of Student Ministries Diane Barnes
dbarnes@hopetoledo.net

Organist Gayle McClellan
gmcclellan@hopetoledo.net

Minister of Communications Amy Rowe
arowe@hopetoledo.net

Director of Pastoral Care Lois Smith

Director of Health Ministries Betty Lorenz
blorenz@hopetoledo.net

Director of Mission Outreach Phil Meuser
pmeuser@hopetoledo.net

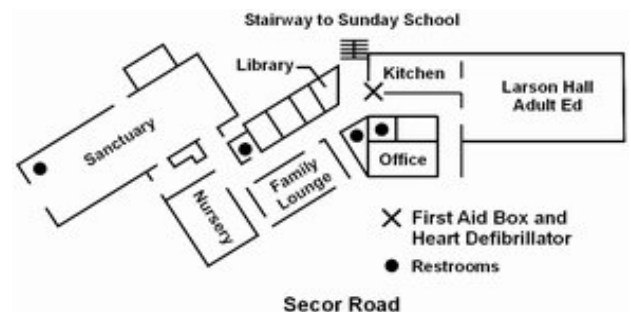
Executive Secretary Linda LaRue
llarue@hopetoledo.net

Financial Administrator Christina Frye
cfrye@hopetoledo.net

Resident Psychologist Dr. Dean Meinke
dmeinke@hopetoledo.net 419-536-8100

Custodian Steve Bowerize

Weekend Custodian Lyndon Lee



CHILD CARE for preschool children is provided during the 9:30 and 11:00 worship services. The Nursery is located outside the Sanctuary.

SERVICES LIVE ON INTERNET! Live streaming of our 9:30 service on Sunday morning is available on our web site: www.hopetoledo.net. Click "Listen Live". If you are unable to attend church on any given Sunday, you can listen to the service "live" in its entirety. To listen to any sermon on the website, click "Sunday Sermons."

RECYCLE bagged inkjet cartridges with proceeds benefiting the Romanian orphanage. Container is inside the kitchen. Cancelled postage stamps are collected in the church office to benefit Heifer International. Yoplait offers 10¢ per gold lid (clean) for the Feed America program. Collection box is outside the Lounge.