

Announcements - November 29, 2009

ample of the love of Jesus Christ"

6-8383 / email: office@hopetoledo.net

www.hopetoledo.net

INVITING PEOPLE TO CONNECT WITH GOD

Welcome to Hope Church! If you are a guest this morning, please notice the staff and lay leaders wearing identification badges. They will be able to assist you with any concerns. For the hearing impaired: place your hearing aids on the "T" switch for direct audio input during the service. Join us this morning in the lounge between services for fellowship and refreshments.

· During worship today, please make sure that cell phones and pagers are in their silent mode or turned off.

ENCOURAGING PEOPLE TO CONNECT WITH EACH OTHER

Servants Needed

A NIGHT IN BETHLEHEM

This year, we have a warp weighted loom and need a **weaver** for this shop. We also need **dancers** for in the sanctuary. If you can help, or if you know of someone gifted in these areas, please call Diane Barnes, 419-536-8383.

DECORATING THE CHURCH

The decorating group will gather on Tuesday, Dec. 1 at 6:00 pm to decorate the church for Advent and Christmas. All are invited! Come when you can and leave when you must. Any and all help is appreciated.



A NIGHT IN BETHLEHEM We need your financial support to cover expenses for this wonderful two-day experience.

Money has been allocated and sponsorships given, however, we are short \$1,000. We need your help! Please use a pink pew envelope and mark it 'Bethlehem' or mail your check to the church office.

We also are in need of items to help decorate the various shops. A list of needed items are located on the hallway table and in the lounge.

THE SALEM TREE in the lounge looks different this year. Rather than toys, we will be collecting basic need items for the Feed Your Neighbor families at Salem. Give Thanks. Give It Twice: Shampoo, deodorant, toothbrushes/paste, soaps, socks, hats, gloves, coats, blankets, etc. are needed. Stop by the lounge and pick an ornament off the tree.

POSTERS AND POSTCARDS for A Night In Bethlehem are available today. Take a poster to work and give postcards to family, friends and neighbors.

EQUIPPING PEOPLE TO LIVE THE GOD LIFE

UPCOMING PREACHING SCHEDULE

Today	First Sunday in Advent - Pastor Laura
Dec. 6	Messiah Cantata at 8:00 and 11:00 Pastor Andrea preaching at 9:30
Dec. 13	Third Sunday in Advent - Pastor Tom
Dec. 20	Two Services: 8:00 - Pastor Andrea 10:00 - Children's Program
Dec. 27	Pastor Laura preaching

CONGRATULATIONS to Megan Hentges and Ashton Pupos, 2009 recipients of the Bernice Gosling Memorial Scholarship. Megan and Ashton will be honored during the worship services today.

BLUE CHRISTMAS Is Christmas time difficult for you? You are not alone. Join with others in a safe environment to learn coping strategies for the holidays. This will be a time to relax, share and learn alternatives for facing the challenges of the season. Join us on Thursdays, Dec. 3, 10, and 17 from 7:00 to 8:00 pm in the library. All are invited.

LUNCHES WITH LUTHER is now on Holiday Break. They will NOT meet again until Tuesday, January 5.

HOPE'S CHANCEL CHOIR will present Handel's Christmas Messiah on Sunday, December 6 at the 8:00 and 11:00 services. Come and experience the joy of our Savior's birth through this inspiring music.

CHRISTMAS EVE SERVICES

4:00 pm	Family Worship with Children's Choir
7:00 pm	Candlelight Worship with Communion, Carols and Brass
11:00 pm	Candlelight, Communion and Adult Choir

CRHP WOMEN AND MEN RETREATS COMING UP
Women's Jan. 30-31 Call Amy Rowe, 419-531-2864
Men's Feb. 13-14 Call Jeff Davis 419-531-4218

SERVICES LIVE ON INTERNET! Live streaming of our 9:30 service on Sunday morning is available on our web site: www.hopetoledo.net. Click "Listen Live". To listen to any sermon on the website, click "Sunday Sermons."

THANKSGIVING OFFERINGS will be benefit local organizations providing food and meals to the hungry.

PRAY for those hospitalized: (*released this week)

Toledo: Pam Schell, St. Vincent: *Andy Evans;

Franciscan Care Center: Marie Vizneau;

At Home: John Wagoner

→ Please notify the church office when you or a family member is hospitalized. (419-536-8383)

CONFIRMATION STUDENTS to be prayed for this week: Matthew Bules, Mark Hadley, Robby Kohler

HOPE COLLEGE STUDENT OF THE WEEK: Please pray for George Hadley. His address is First St. Towers #432 E, 1250 First Street, West Lafayette, IN 47906. A note to George would be appreciated.

BIRTHDAY CARDS are sent to our college students. Please stop by the lounge this morning to add a greeting to those with upcoming birthdays.

ALTAR FLOWERS have been given to the Glory of God in honor and celebration of the wedding of David Guy and Joan Knestrick.

CHRISTIAN SYMPATHY to John and Laurie Mohn and family on the death of his father, James Mohn, who died on Nov. 20. Services were held at St. Michael's in the Hills on Nov. 24. Condolences can be sent to 2944 Pembroke, Toledo, OH 43606.

SCHEDULE

THIS WEEK AT HOPE - Nov. 29 - Dec. 5

TODAY 8:00, 9:30 and 11:00 Worship Services
 9:30am Disciples in Training and SS
 7:00pm CRHP Men in Upper Room

MON 1:00pm John Study at Woodlands
 6:30pm Healing Team in Library
 7:00pm John Study @ Kalbs
 7:30pm Alanon in Basement

TUES 9:30pm John Study at Café Marie
 6:00pm Decorating the church
 6:45pm Experiencing God in Library
 7:00pm Mission Outreach in Lounge
 8:30pm A.A. in Larson Hall

WED 7:00am Advent Prayer Service in Sanctuary
 5:15pm Chime Choir in Choir Room
 6:00pm Children's Choir in Choir Room
 6:00pm Confirmation Class in Lounge
 7:00pm Chancel Choir in Choir Room
 8:00pm Hand Bell Choir in Sanctuary

THURS 7:00am Thursday Morning Bible Study in Lounge
 9:30am Women's Study at Joy's
 6:30pm CHR Women in Lounge
 7:00pm Blue Christmas in Library

FRI 8:00pm AA in Larson Hall

SAT 9:00am Messiah Rehearsal in Sanctuary
 10:00am Praise Team in Sanctuary
 11:00am Trumpets in Choir Room
 1-3pm DIT Caroling

Pastor Tom Schaeffer will be installed at Threshold Church, the new Toledo area ELCA church plant and our nearest Lutheran neighbor! This dynamic ministry worships in the Omni nightclub with a live

rock band. Meet at church at **6:30 pm Sunday, December 6.** Contact Pastor Laura for more info.

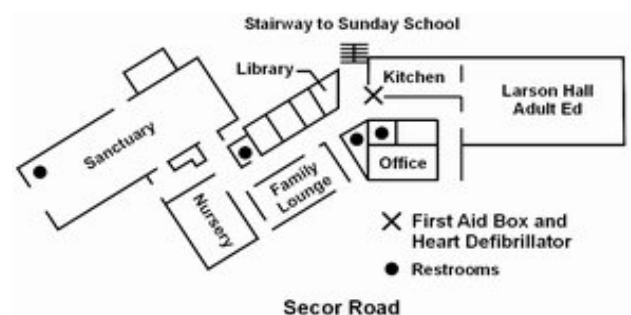
MINISTRY

TODAY'S MINISTERS

PROCLAIMERS	8:00	John Drowatzky
OF THE WORD	11:00	Jim Hentges
ACOLYTE/CRUCIFER	8:00	Steven Barnes
	11:00	Sara Martin
WELCOME TEAMS	8:00	Don and Marian Mulligan
	9:30	Greg and Barb Whetstone
		Joy Gibbs, Dick Melton
	11:00	Lore Schueler, Marjorie Prueter
		Ron and Marva Pettaway

HOPE'S MINISTRY TEAM

Ministers The Members of Hope
 Interim Senior Pastor Andrea Starn
 (Home 1-419-424-6663) (Cell 419-348-1204)
astarn@hopetoledo.net
 Discipleship Pastor Tom Fraser
 (Home 419-382-9669) tfraser@hopetoledo.net
 Pastor of Student and Family Life Laura Strietelmeier
 (Cell 419-309-9358) lstrietelmeier@hopetoledo.net
 Minister of Music Lori Bitz
lbitz@hopetoledo.net
 Minister of Student Ministries Diane Barnes
dbarnes@hopetoledo.net
 Organist Gayle McClellan
gmcclellan@hopetoledo.net
 Minister of Communications Amy Rowe
arowe@hopetoledo.net
 Director of Pastoral Care Lois Smith
 Director of Health Ministries Betty Lorenz
blorenz@hopetoledo.net
 Director of Mission Outreach Phil Meuser
pmeuser@hopetoledo.net
 Executive Secretary Linda LaRue
llarue@hopetoledo.net
 Financial Administrator Christina Frye
cfrye@hopetoledo.net
 Resident Psychologist Dr. Dean Meinke
dmeinke@hopetoledo.net 419-536-8100
 Custodian Steve Bowerize
 Weekend Custodian Lyndon Lee



CHILD CARE for preschool children is provided during the 9:30 and 11:00 worship services. The Nursery is located outside the Sanctuary.

RECYCLE bagged inkjet cartridges with proceeds benefiting the Romanian orphanage. Container is inside the kitchen. Cancelled postage stamps are collected in the church office to benefit Heifer International. Yoplait offers 10¢ per gold lid (clean) for the Feed America program. Collection box is outside the Lounge.

FOOD FOR THE HUNGRY is collected the 3rd Sunday of every month. Your donations of canned goods and non-perishable items are placed in the grocery cart during all three services.